



**Features:**

- High current, low loss of iron powder core
- Low profile for machine placement
- Minimize electromagnetic interference
- Suppress common mode noise
- Prevent EMI effect via precise impedance
- Custom design available

**Part numbering system**

**ASE 1040 - 3R3 M**

**A      B      C      D**

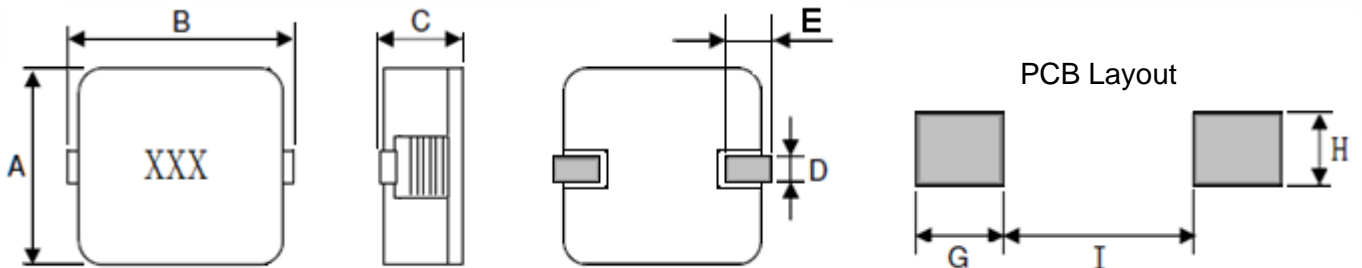
**A :** Series Name.

**C :** Inductance. ( for example 3R3=3.3 uH )

**B :** Dimension.

**D :** Inductance Tolerance. ( for example M=±20% )

**Mechanical dimension: (Unit: mm)**



系列 \ 尺寸	A	B	C	D	E	G	H	I
<b>ASE0540(new)</b>	5.3±0.3	5.6±0.3	4.0±0.3	1.0±0.3	1.2±0.5	2.2	2.0	2.0
ASE0730	6.9±0.4	7.0±0.4	3.3Max	1.2±0.3	1.8±0.5	2.7	2.2	2.4
ASE0740	6.9±0.4	7.0±0.4	4.0Max	1.2±0.3	1.8±0.5	2.7	2.2	2.4
ASE0750	6.9±0.4	7.0±0.4	5.0Max	1.2±0.3	1.8±0.5	2.7	2.2	2.4
ASE1030	10.2±0.5	10.5±0.5	3.1 Max	2.0±0.5	2.0±0.5	3.5	4.0	3.8
ASE1040	10.2±0.5	10.5±0.5	4.2Max	2.0±0.5	2.0±0.5	3.5	4.0	3.8
ASE1050	10.2±0.5	10.5±0.5	5.0Max	2.0±0.5	2.0±0.5	3.5	4.0	3.8
ASE1335	12.8±0.5	13.0±1.0	3.5Max	2.5±0.5	3.0±1.0	4.5	5.0	6.0
ASE1350	12.8±0.5	13.0±1.0	5.0Max	2.5±0.5	3.0±1.0	4.5	5.0	6.0
ASE1365	12.8±0.5	13.0±1.0	6.5Max	3.0±1.0	3.0±1.0	4.5	5.0	6.0



扁平线大功率电感 ASE 系列

Flat wire high current power inductors AS series



ASE1890	18.2±0.5	18.3±1.0	9.2Max	3.5±1.5	4.5±1.0	6.0	6.0	7.3
ASE2212	22.0±1.0	22.5±1.0	12±0.4	3.5±1.0	5.5±1.0	7.0	6.0	9.0

**Electrical Characteristics: TEST CONDITION: AT 25°C: 100KHz/0.1V**

PART NO.	L(0A)( $\mu$ H) ( $\pm 20\%$ )	I <sub>rms</sub> (A) (Typ.)	I <sub>sat</sub> (A) (Typ.)	DCR(m $\Omega$ ) Typ.	DCR(m $\Omega$ ) Max.	WURTH P/N
ASE0540-R22M	0.22	20	25	1.25	1.38	744316022
ASE0540-R33M	0.33	18.5	20	1.75	1.93	744316033
ASE0540-R47M	0.47	15	16	2.75	3.03	744316047
ASE0540-R68M	0.68	12.75	13.5	4.0	4.4	744316068
ASE0540-1R0M	1.0	11.5	11.5	4.75	5.23	744316100
ASE0540-1R5M	1.5	9	9	8.15	8.97	744316150
ASE0540-2R2M	2.2	7.5	7.5	11.3	12.43	744316220
ASE0540-3R3M	3.3	5.75	5.8	18.5	20.35	744316330
ASE0540-4R7M	4.7	4.6	4.7	24.5	26.95	744316470
ASE0540-5R6M	5.6	4.5	4.6	28.5	31.35	744316560

NOTE:

1. All test data is referenced to 25°C ambient.
2. I<sub>rms</sub>: DC current(A) that will cause an approximate  $\Delta T$  of 50°C.
3. I<sub>sat</sub>: DC current(A) that will cause L<sub>o</sub> to drop approximate 30%.
4. Operating temperature range is -40°C to 125°C.
5. The part temperature(ambient and temp rise) should not exceed 125°C under worse case operating conditions. Circuit design, component placement, PWB trace size and thickness, airflow and other cooling provision all affect the part temperature. Part temperature should be verified in the end application.

**Electrical Characteristics: TEST CONDITION: AT 25°C: 100KHz/0.1V**

PART NO.	L(0A)( $\mu$ H) ( $\pm 20\%$ )	I <sub>rms</sub> (A) (Typ.)	I <sub>sat</sub> (A) (Typ.)	DCR(m $\Omega$ ) Typ.	DCR(m $\Omega$ ) Max.	WURTH P/N
ASE0730-R13M	0.13	22.0	48.0	0.91	1.00	744310013
ASE0730-R24M	0.24	18.0	40.0	1.8	1.98	744310024
ASE0730-R52M	0.52	14.0	20.0	3.7	4.07	744310055
ASE0730-R95M	0.95	11.0	13.0	6.2	6.82	744310095
ASE0730-1R2M	1.15	8.5	13.0	8.6	9.46	744310115
ASE0730-1R5M	1.5	7.5	12.0	12.7	13.97	744310150



扁平线大功率电感 ASE 系列

Flat wire high current power inductors AS series



ASE0730-2R0M	2.0	6.5	9.0	14.2	15.62	744310200
ASE0740-R22M	0.22	21.0	32.0	1.1	1.21	744311022
ASE0740-R40M	0.4	19.0	25.0	1.85	2.04	744311047
ASE0740-R68M	0.68	17.0	20.0	3.1	3.41	744311068
ASE0740-1R0M	1.0	15.0	19.0	4.6	5.06	744311100
ASE0740-1R5M	1.5	11.0	14.0	6.6	7.26	744311150
ASE0740-2R2M	2.2	9.0	13.0	11.4	12.54	744311220
ASE0740-3R3M	3.3	6.5	11.0	17.2	18.92	744311330
ASE0740-4R7M	4.7	6.0	7.0	19.5	21.45	744311470
ASE0750-R24M	0.24	20.0	28.0	1.0	1.10	744314024
ASE0750-R47M	0.47	18.0	20.0	1.35	1.49	744314047
ASE0750-R76M	0.76	15.5	15.0	2.25	2.48	744314076
ASE0750-1R1M	1.1	15.0	13.0	3.15	3.47	744314110
ASE0750-1R5M	1.5	13.0	11.0	4.3	4.73	744314150
ASE0750-2R0M	2.0	11.5	9.0	5.85	6.44	744314200
ASE0750-3R3M	3.3	9.0	8.0	9.0	9.90	744314330
ASE0750-4R9M	4.9	6.5	6.5	14.5	15.95	744314490
ASE0750-6R5M	6.5	6.0	6.0	21.5	23.65	744314650
ASE0750-7R6M	7.6	4.2	4.8	30.2	33.22	744314760
ASE0750-8R5M	8.5	4.0	4.5	32.5	35.75	744314850
ASE0750-100M	10.0	3.5	4.0	33.0	36.30	744314101

**Electrical Characteristics: TEST CONDITION: AT 25oC: 100KHz/0.1V**

PART NO.	L(0A)(uH) (±20%)	I <sub>rms</sub> (A) (Typ.)	I <sub>sat</sub> (A) (Typ.)	DCR(mΩ) Typ.	DCR(mΩ) Max.	WURTH P/N
ASE1030-R20M	0.20	22.0	50.0	0.82	0.90	744323020
ASE1030-R33M	0.33	18.0	36.0	2.17	2.39	744323033
ASE1030-R56M	0.56	18.0	33.0	2.17	2.39	744323056
ASE1030-R68M	0.68	14.0	21.0	4.79	5.27	744323068
ASE1030-1R0M	1.0	14.0	21.0	4.79	5.27	744323100



扁平线大功率电感 ASE 系列

Flat wire high current power inductors AS series



ASE1030-1R2M	1.2	12.0	15.0	6.6	7.26	744323120
ASE1030-1R5M	1.5	12.0	18.0	6.6	7.26	744323150
ASE1030-2R2M	2.2	9.0	15.0	11.38	12.52	744323220
ASE1040-R15M	0.15	25.0	60.0	0.58	0.64	744355215
ASE1040-R30M	0.30	22.0	35.0	1.10	1.21	744355230
ASE1040-R56M	0.56	20.0	30.0	1.61	1.77	744355256
ASE1040-1R0M	1.00	16.0	20.0	3.30	3.63	7443552100
ASE1040-1R5M	1.50	14.0	17.0	5.30	5.83	7443552150
ASE1040-2R2M	2.00	11.0	13.0	7.30	8.03	7443552200
ASE1040-2R8M	2.80	9.5	11.0	10.6	11.66	7443552280
ASE1040-4R3M	4.30	8.0	8.0	14.1	15.51	7443552430
ASE1050-R16M	0.16	25.0	58.0	0.51	0.56	744325016
ASE1050-R40M	0.40	24.0	37.0	0.67	0.74	744325040
ASE1050-R72M	0.72	22.0	35.0	1.30	1.43	744325072
ASE1050-1R2M	1.20	20.0	25.0	1.80	1.98	744325120
ASE1050-1R8M	1.80	16.0	18.0	3.50	3.85	744325180
ASE1050-2R4M	2.40	14.0	17.0	4.75	5.23	744325240
ASE1050-3R3M	3.30	12.0	15.0	5.90	6.49	744325330
ASE1050-4R2M	4.20	11.0	14.0	7.10	7.81	744325420
ASE1050-5R5M	5.50	10.0	12.0	10.3	11.33	744325550
ASE1050-6R5M	6.5	8.4	10.0	12.5	13.75	744325650
ASE1050-7R8M	7.8	8.0	9.5	13.6	14.96	744325780
ASE1050-100M	10	7.2	8.5	16.3	17.93	7443251000
ASE1050-160M	16	5.0	6.5	34.5	37.95	7443251600

**Electrical Characteristics: TEST CONDITION: AT 25oC: 100KHz/0.1V**

PART NO.	L(0A)(uH) (±20%)	Irms(A) (Typ.)	Isat(A) (Typ.)	DCR(mΩ) Typ.	DCR(mΩ) Max.	WURTH P/N
ASE1335-R25N	0.25	24.0	60.0	0.75	0.83	744313025
ASE1335-R68M	0.68	22.0	40.0	1.58	1.74	744313068
ASE1335-1R2M	1.20	17.0	28.0	2.85	3.14	744313120



扁平线大功率电感 ASE 系列

Flat wire high current power inductors AS series



ASE1335-1R8M	1.80	14.0	22.0	5.60	6.16	744313180
ASE1335-2R2M	2.20	14.0	18.0	5.70	6.27	744313220
ASE1335-3R3M	3.30	12.0	14.0	8.10	8.91	744313330
ASE1350-R19M	0.19	29.0	60.0	0.50	0.55	744355019
ASE1350-R47M	0.47	26.0	50.0	0.90	0.99	744355047
ASE1350-R90M	0.90	24.0	28.0	1.60	1.76	744355090
ASE1350-1R4M	1.40	22.0	26.0	2.40	2.64	7443550140
ASE1350-2R3M	2.30	17.5	17.0	3.70	4.07	7443550230
ASE1350-3R2M	3.20	16.0	15.0	5.30	5.83	7443550320
ASE1350-4R8M	4.80	11.0	13.0	10.5	11.55	7443550480
ASE1350-6R0M	6.00	9.5	11.5	13.5	14.85	7443550600
ASE1350-8R2M	8.20	10.0	11.0	11.60	12.76	7443550820
ASE1350-100M	10.0	8.5	10.0	14.10	15.51	7443550101
ASE1365-R22M	0.20	32.0	65.0	0.35	0.39	744355122
ASE1365-R47M	0.47	30.0	50.0	0.67	0.74	744355147
ASE1365-R82M	0.82	27.0	35.0	0.90	0.99	744355182
ASE1365-1R3M	1.30	25.0	25.0	1.80	1.98	7443551130
ASE1365-2R0M	2.00	23.0	22.0	2.60	2.86	7443551200
ASE1365-2R8M	2.80	20.0	17.5	3.30	3.63	7443551280
ASE1365-3R7M	3.70	17.0	16.0	4.90	5.39	7443551370
ASE1365-4R7M	4.70	13.0	15.0	7.00	7.70	7443551470
ASE1365-6R0M	6.00	12.0	14.0	8.40	9.24	7443551600
ASE1365-7R3M	7.30	13.0	12.0	5.90	6.49	7443551730
ASE1365-9R2M	9.20	12.0	10.5	7.80	8.58	7443551920
ASE1365-110M	11.3	11.0	9.5	9.10	10.0	7443551111
ASE1365-130M	13.0	10.0	9.0	11.2	12.32	7443551131
ASE1365-150M	15.4	9.0	8.0	14.8	16.28	7443551151
ASE1365-220M	22.0	6.0	6.5	24.7	27.17	7443551221

**Electrical Characteristics:**

**TEST CONDITION: AT 25oC: 100KHz/0.1V**

PART NO.	L(0A)(uH) (±20%)	I <sub>rms</sub> (A) (Typ.)	I <sub>sat</sub> (A) (Typ.)	DCR(mΩ) Typ.	DCR(mΩ) Max.	WURTH P/N
ASE1890-R82M	0.82	41.5	65.0	0.54	0.58	7443556082
ASE1890-1R3M	1.30	34.5	62.0	0.94	1.02	7443556130



扁平线大功率电感 ASE 系列

Flat wire high current power inductors AS series



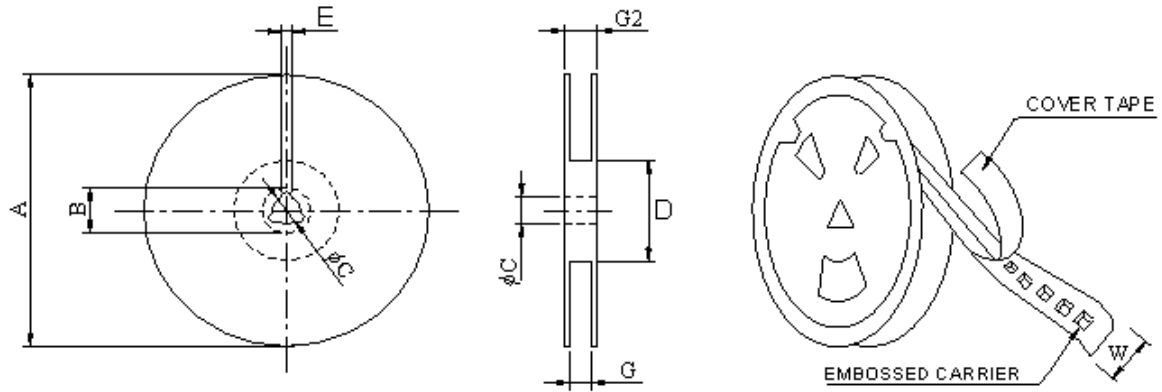
ASE1890-1R9M	1.90	32.5	52.0	1.20	1.30	7443556190
ASE1890-2R6M	2.60	31.5	50.0	1.58	1.71	7443556260
ASE1890-3R5M	3.50	22.5	37.0	3.10	3.35	7443556350
ASE1890-4R5M	4.50	20.5	37.0	3.40	3.67	7443556450
ASE1890-5R6M	5.60	19.0	33.0	3.70	4.00	7443556560
ASE1890-6R8M	6.80	18.5	27.0	4.10	4.43	7443556680
ASE1890-100M	10.0	15.0	21.5	6.90	7.45	74435561100
ASE1890-100MT	10.0	16.50	18.5	7.10	7.67	74435571100
ASE1890-150M	15.0	14.0	14.0	9.30	10.05	74435571500
ASE1890-220M	22.0	11.0	11.0	14.6	15.77	74435572200
ASE1890-330M	33.0	8.5	9.0	22.6	24.41	74435573300
ASE1890-470M	47.0	6.8	7.0	34.0	36.72	74435574700

PART NO.	L(0A)(uH) (±20%)	I <sub>rms</sub> (A) (Typ.)	I <sub>sat</sub> (A) (Typ.)	DCR(mΩ) Typ.	DCR(mΩ) Max.	WURTH P/N
ASE2212-3R3M	3.3	29	45	1.7	1.87	74435580330
ASE2212-6R8M	6.8	28.5	31	2.1	2.31	74435580680
ASE2212-8R2M	8.2	25.5	30	2.7	2.97	74435580820
ASE2212-100M	10.0	21	26	3.4	3.74	74435581000
ASE2212-120M	12.0	19	25	4.3	4.73	74435581200
ASE2212-220M	22.0	15	18	7.0	7.7	74435582200
ASE2212-330M	33.0	11.5	15	13.2	14.52	74435583300
ASE2212-470M	47.0	9	12	19.2	21.12	74435584700
ASE2212-680M	68.0	7.5	9.5	27.3	30.03	74435586800
ASE2212-820M	82.0	7	8.5	30.4	33.44	74435588200

NOTE:

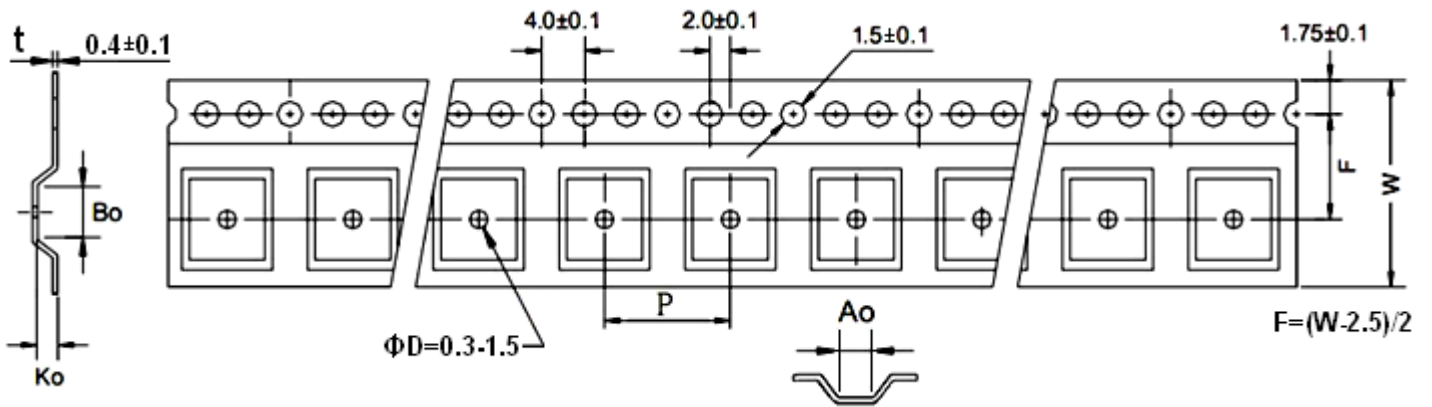
1. All test data is referenced to 25°C ambient.
2. I<sub>rms</sub>: DC current(A) that will cause an approximate ΔT of 50°C.
3. I<sub>sat</sub>: DC current(A) that will cause L<sub>o</sub> to drop approximate 30%.
4. Operating temperature range is -40°C to 125°C.
5. The part temperature(ambient and temp rise) should not exceed 125°C under worse case operating conditions. Circuit design, component placement, PWB trace size and thickness, airflow and other cooling provision all affect the part temperature. Part temperature should be verified in the end application.

## PACKING INFORMATION



\*CARRIER TAPE WIDTH: W

Series	TYPE	A(Ref.)	B(Ref.)	C(Ref.)	D(Ref.)	E(Ref.)	G(Ref.)	G2(Ref.)
ASE0540	13"*12mm	330±1	20±0.8	13±0.5	100±1	2.0±0.5	12.5±0.5	16.5±0.5
ASE0730	13"*16mm	330±1	20±0.8	13±0.5	100±1	2.0±0.5	16.5±0.5	20.5±0.5
ASE0740	13"*16mm	330±1	20±0.8	13±0.5	100±1	2.0±0.5	16.5±0.5	20.5±0.5
ASE0750	13"*16mm	330±1	20±0.8	13±0.5	100±1	2.0±0.5	16.5±0.5	20.5±0.5
ASE1030	13"*24mm	330±1	20±0.8	13±0.5	100±1	2.0±0.5	24.5±0.5	28.5±0.5
ASE1040	13"*24mm	330±1	20±0.8	13±0.5	100±1	2.0±0.5	24.5±0.5	28.5±0.5
ASE1050	13"*24mm	330±1	20±0.8	13±0.5	100±1	2.0±0.5	24.5±0.5	28.5±0.5
ASE1335	13"*24mm	330±1	20±0.8	13±0.5	100±1	2.0±0.5	24.5±0.5	28.5±0.5
ASE1350	13"*24mm	330±1	20±0.8	13±0.5	100±1	2.0±0.5	24.5±0.5	28.5±0.5
ASE1365	13"*24mm	330±1	20±0.8	13±0.5	100±1	2.0±0.5	24.5±0.5	28.5±0.5
ASE1890	13"*32mm	330±1	20±0.8	13±0.5	100±1	2.0±0.5	32.5±0.5	37±0.5
ASE2212	13"*44mm	330±1	20±0.8	13±0.5	100±1	2.0±0.5	44.5±0.5	49±0.5



Series	QTY (Pcs/Reel)	Ao	Bo	Ko	W	P
AASE0540	1500	5.6	6.0	4.2	12	8
AASE0730	1500	7.2	7.8	3.5	16	12
AASE0740	1000	7.2	7.8	4.2	16	12
AASE0750	1000	7.2	7.8	5.2	16	12
AASE1030	800	10.8	11.3	3.5	24	16
AASE1040	800	10.8	11.3	4.2	24	16
AASE1050	700	10.8	11.3	5.2	24	16
AASE1335	600	13.5	14.0	3.7	24	16
AASE1350	500	13.5	14.0	5.2	24	16
AASE1365	500	13.5	14.0	6.7	24	16
AASE1890	250	18.8	19.4	9.5	32	24
AASE2212	120	23.1	23.65	12.8	44	32

Typical Pulling Force: 10-130 grams

