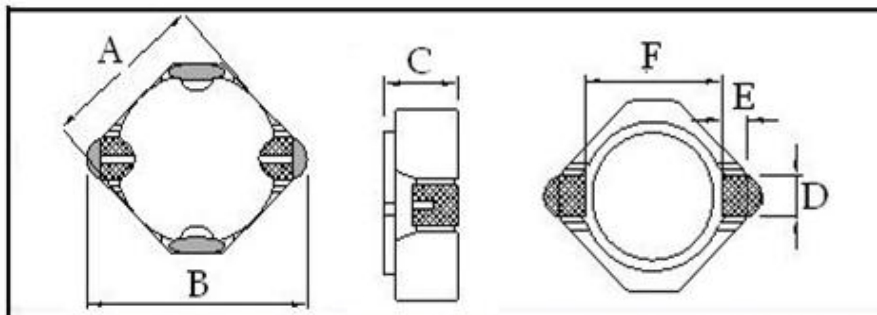
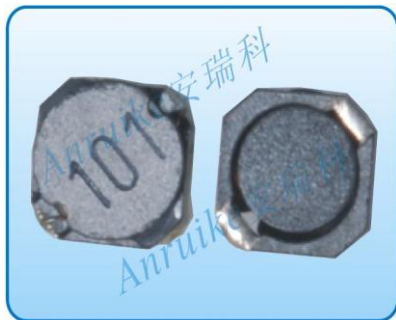


Anruike 安瑞科 / SMD POWER INDUCTORS CDT3B18 SERIES

外型及尺寸 (单位: mm) Shape and size (unit: mm)

Anruike/安瑞科



| 型号 | A (Max) | B (Max) | C (Max) | D (Ref) | E | F | 载带盘装 |
|---------|---------|---------|---------|---------|------|-----|-----------|
| CDT3B18 | 3.0 | 4.6 | 1.8 | 0.55 | 0.30 | 3.0 | 2000PCS/R |

电气参数:Electrical parameters:

Anruike/安瑞科

| 产品型号 | 电感量 (uH) | 公差 (%) | 测试频率 | 直流电阻 RDC (Ω) (Max) | 额定电流 IDC (A) (Max) |
|--------------|----------|--------|--------------|--------------------|--------------------|
| CDT3B18-1R2M | 1.2 | ±20 | 100KHz/0.25V | 0.017 | 1.20 |
| CDT3B18-1R5M | 1.5 | ±20 | 100KHz/0.25V | 0.022 | 1.10 |
| CDT3B18-1R8M | 1.8 | ±20 | 100KHz/0.25V | 0.025 | 1.05 |
| CDT3B18-2R0M | 2.0 | ±20 | 100KHz/0.25V | 0.028 | 1.00 |
| CDT3B18-2R2M | 2.2 | ±20 | 100KHz/0.25V | 0.030 | 0.95 |
| CDT3B18-2R7M | 2.7 | ±20 | 100KHz/0.25V | 0.033 | 0.90 |
| CDT3B18-3R3M | 3.3 | ±20 | 100KHz/0.25V | 0.040 | 0.80 |
| CDT3B18-3R6M | 3.6 | ±20 | 100KHz/0.25V | 0.046 | 0.74 |
| CDT3B18-4R7M | 4.7 | ±20 | 100KHz/0.25V | 0.059 | 0.65 |
| CDT3B18-5R6M | 5.6 | ±20 | 100KHz/0.25V | 0.071 | 0.61 |
| CDT3B18-6R8M | 6.8 | ±20 | 100KHz/0.25V | 0.091 | 0.58 |
| CDT3B18-8R2M | 8.2 | ±20 | 100KHz/0.25V | 0.100 | 0.54 |
| CDT3B18-100M | 10 | ±20 | 100KHz/0.25V | 0.130 | 0.49 |
| CDT3B18-120M | 12 | ±20 | 100KHz/0.25V | 0.160 | 0.45 |
| CDT3B18-150M | 15 | ±20 | 100KHz/0.25V | 0.190 | 0.40 |
| CDT3B18-180M | 18 | ±20 | 100KHz/0.25V | 0.230 | 0.37 |
| CDT3B18-220M | 22 | ±20 | 100KHz/0.25V | 0.270 | 0.32 |
| CDT3B18-270M | 27 | ±20 | 100KHz/0.25V | 0.350 | 0.30 |
| CDT3B18-330M | 33 | ±20 | 100KHz/0.25V | 0.390 | 0.28 |
| CDT3B18-390M | 39 | ±20 | 100KHz/0.25V | 0.500 | 0.25 |
| CDT3B18-470M | 47 | ±20 | 100KHz/0.25V | 0.580 | 0.22 |
| CDT3B18-560M | 56 | ±20 | 100KHz/0.25V | 0.63 | 0.20 |
| CDT3B18-680M | 68 | ±20 | 100KHz/0.25V | 0.80 | 0.15 |

以上为常用参数,精准参数以样品为准。因版面原因未能全部录入,需更多参数或特殊要求请联系我司

深圳市安瑞科电子有限公司 优质功率电感专业生产商. Tel:0755-29805463 27994543 FAX:0755-29805221

网址:<http://www.anruike.com> E-mail: anruike@anruike.com QQ:1193940818